



\$350/night\*

3  
BEDROOM

2  
BATH

1,200 square feet  
Maximum occupancy: 8

BUILT IN 1986  
RENOVATED IN 2006

\*plus local and state taxes where applicable

## THE LOG CABIN

Rough-hewn and rustic never felt this good.

*Your own family-size cabin nestled in the woods, above a creek.*

One big, wide inviting covered porch would be enough for most cabins; this one has two. One in the front overlooks the approach to the house carved into the hill; the other across the back overlooks the creek at the bottom of the hill. Both provide a relaxing sense of place in the whispering flow of the creek and in the sighing breezes through the trees.

Between those porches is a beautifully appointed three-bedroom, two-bath home; the word cabin only comes to mind in the warm colors and materials in this one, and the warm even whimsical way it's furnished. Your kind of cabin has a steam shower in the master, a comfy iron bed in another bedroom, a bunk bed and a single in another, and a full kitchen in a big open room for living, dining and relaxing.

### SPECIAL FEATURES

- Two massive covered porches with chairs and tables
- Full log construction over basement with laundry room
- Modern kitchen with stainless steel appliances
- Luxurious master bathroom
- Bunk bed and single bed room perfect for kids

### AMENITIES



TV & DVD



FULL KITCHEN



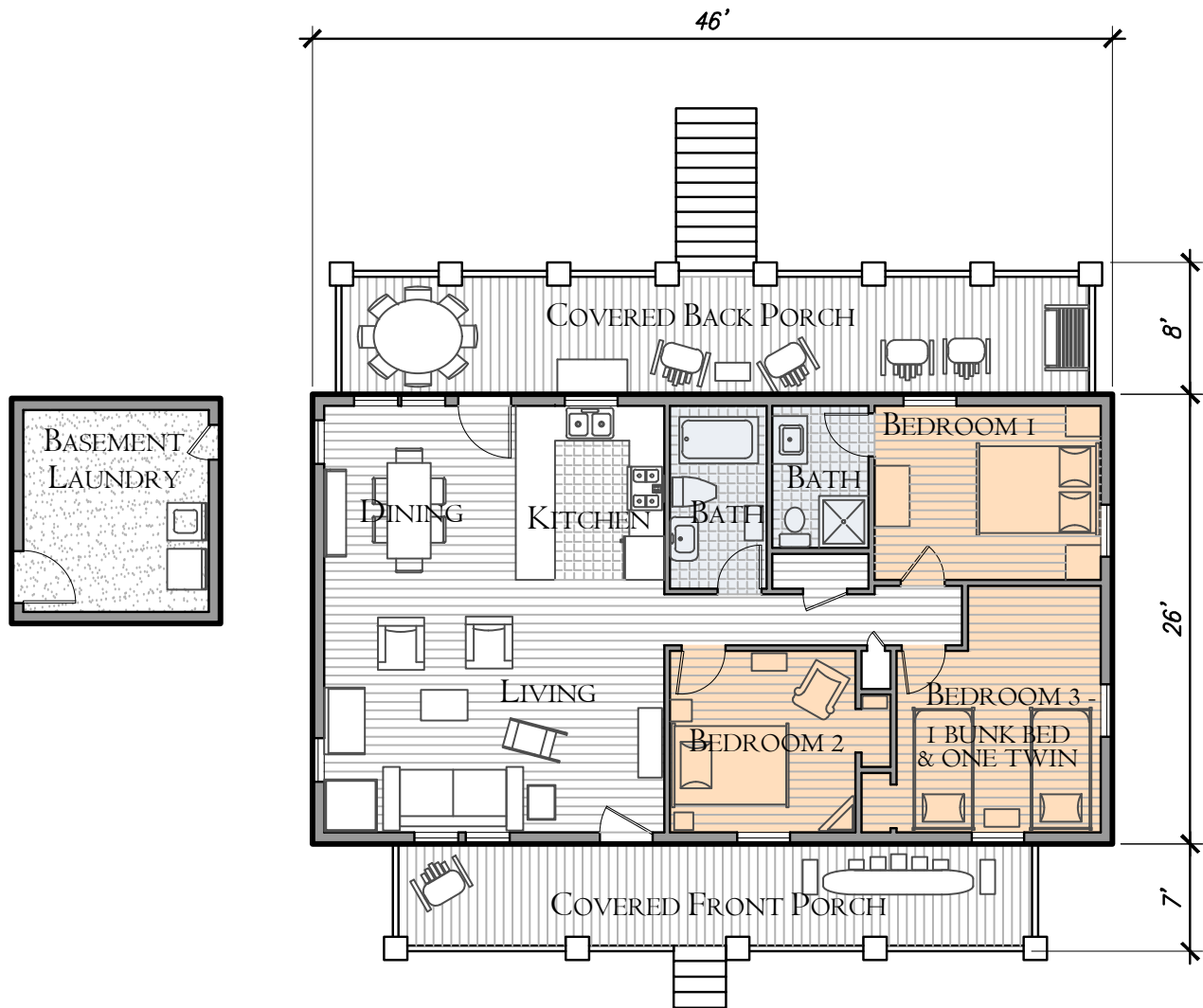
WASHER/DRYER



WIRELESS INTERNET



# THE LOG CABIN



FOR MORE INFORMATION & PHOTOS  
[www.loneoaksfarm.com/logcabin](http://www.loneoaksfarm.com/logcabin)



10,000 Lake Hardeman Rd.  
Middleton, TN 38052  
(731) 376-0882

