



\$275/night*

1
BEDROOM

1
BATH

800 square feet
Maximum occupancy: 2

BUILT IN 1832
RENOVATED IN 2001

*plus local and state taxes where applicable

THE CABIN AT WATERFALL POND

A trip back in time for our time.

An actual 1832 log cabin, combining pieces from the period with modern comfort.

The cabin was taken apart, every log numbered, reassembled and renovated here in the woods on the water, here where you can hear the gentle signature waterfall from the swing on the covered porch, here where history provides comfort. The 250-year-old heart pine floor downstairs came from an old church. The built-in cabinets that disguise the modern conveniences within are antique Shaker. The massive fireplace and mantle are antique hand-cut limestone from days long past. The big leather couch that faces it is from our time, but the furnishings around it are from another. The stairs up to the bedroom suite and bath that make up the entire second floor came from a stagecoach inn. The Internet connection is wireless but the sense of place is timeless.

The peace you feel here comes from centuries before. Pace and pulse and pressure slow. Time here becomes relative.

SPECIAL FEATURES

- Furnished with an impressive collection of period hardware and furniture
- Rumford fireplace constructed of antique, hand-cut limestone blocks
- Located on beautiful waterfall pond, perfect for boating or fishing
- Back porch with massive porch swing, perfect for lounging or napping

AMENITIES



TV & DVD



KITCHENETTE



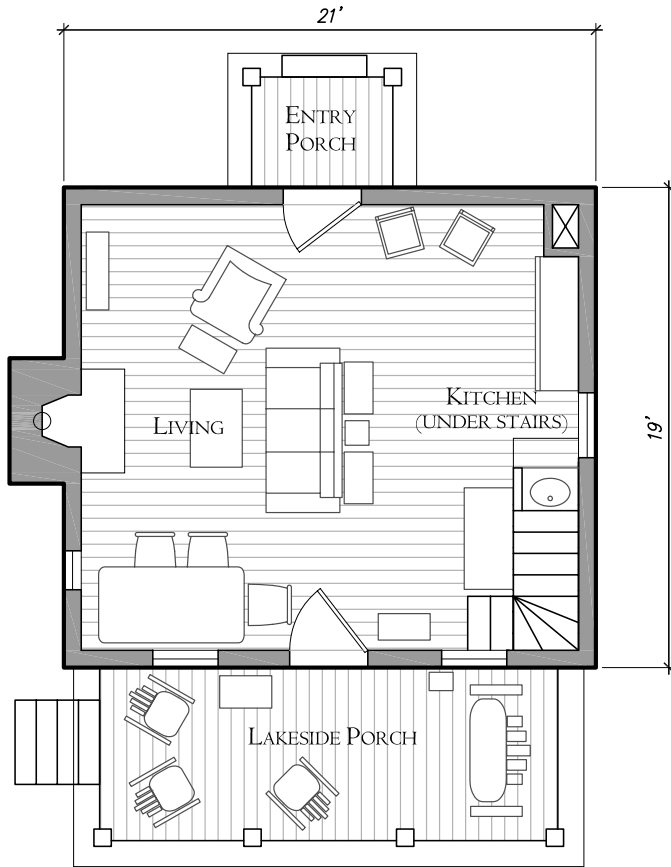
FIREPLACE



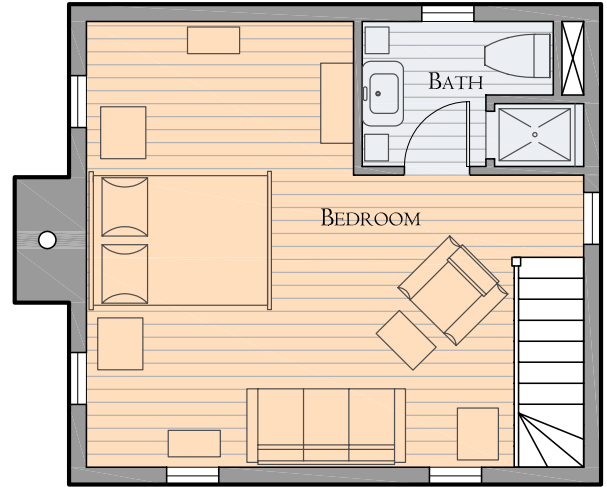
WIRELESS INTERNET



THE CABIN AT WATERFALL POND



FIRST FLOOR



SECOND FLOOR

FOR MORE INFORMATION & PHOTOS
www.loneoaksfarm.com/waterfall



10,000 Lake Hardeman Rd.
Middleton, TN 38052
(731) 376-0882

