



\$200/night*

2
BEDROOM

1.5
BATH

1,125 square feet
Maximum occupancy: 8

BUILT IN 1986
RENOVATED IN 1999

*plus local and state taxes where applicable

WING WALL FARMHOUSE

Surprisingly accommodating, up and down.

A farmhouse as cozy as it looks, but bigger than you think.

Conveniently located on Lake Hardeman Road, there's more here than meets the eye.

On top, you enter through a big eat-in farmhouse kitchen, with a half-bath and utility room off of it in one direction, and a hall with two bedrooms and a bath in another direction.

Down below, down the spiral staircase in a corner of the kitchen, is a big den with a wood stove on a stone hearth, handsome built-in cabinetry, and a door opening onto the covered patio and private garden.

SPECIAL FEATURES

- Spiral staircase leading to an open den with private patio access, perfect for kids or parties
- Wood burning stove
- Located on the edge of the Farm with easy road access

AMENITIES



TV & DVD



FULL KITCHEN



FIREPLACE



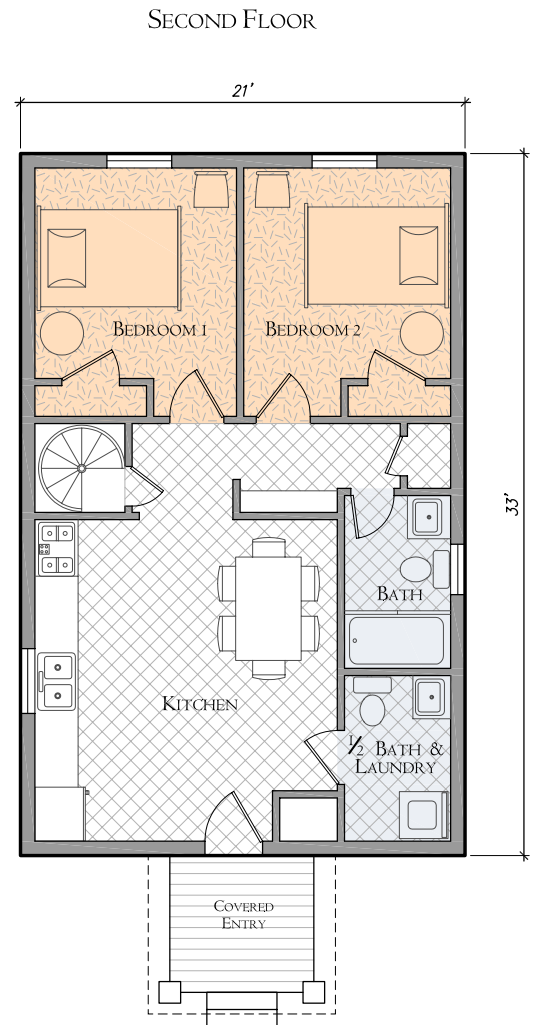
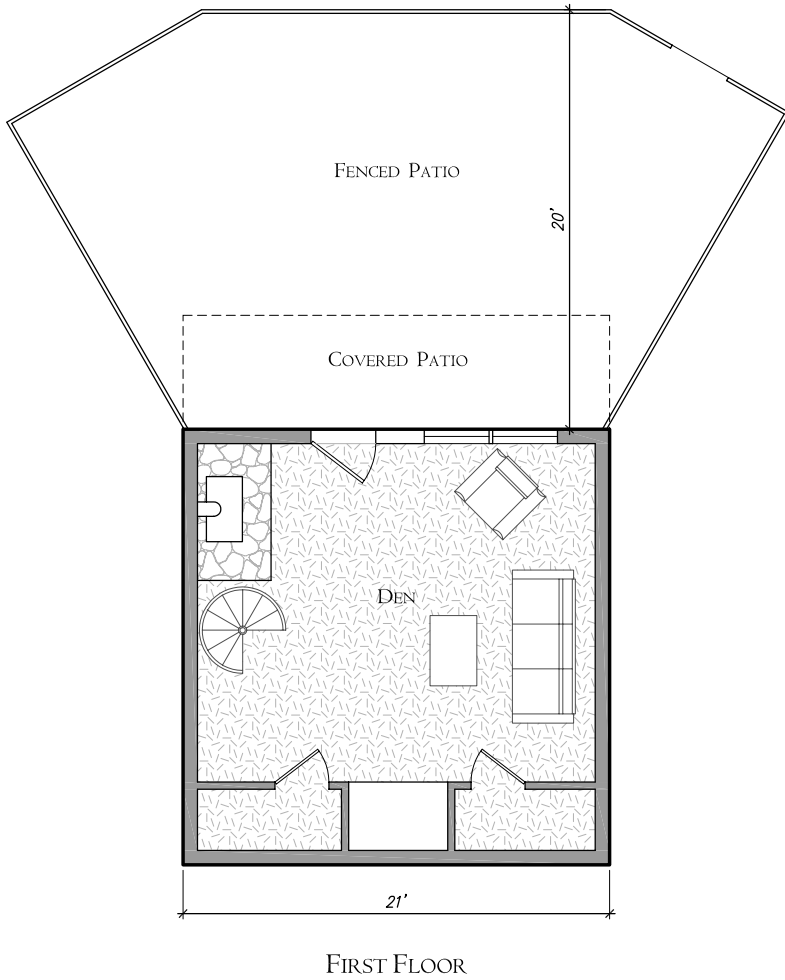
WIRELESS INTERNET



WASHER/DRYER



WING WALL FARMHOUSE



FOR MORE INFORMATION & PHOTOS
www.loneoaksfarm.com/wingwall



10,000 Lake Hardeman Rd.
Middleton, TN 38052
(731) 376-0882

